

L&R FLATRACK SPARE PARTS CATALOG

2013 Edition



INDUSTRIA LUIS & RICARDO E.I.R.L

L&R Spare Parts Service Business Center

Add: Urbanización El Olivar Mz L Lote 5 / Calle las Moras 109
Callao, Lima - Perú

Tel: (511) 4842320 / (51) 998390284

Fax: (511) 4842320

E-mail: industria_lr@yahoo.es & gerencia@industria-lr.com

Website: www.industria-lr.com



L&R SPARE PARTS LIST (FLATRACK PART)

INDEX

INTRODUCTION

Page 3

1) INNER HINGES

Page 4



2) OUTER HINGES

Page 8



3) INNER BOSSES

Page 13



4) OUTER BOSSES

Page 17



5) TOP PLATES

Page 20



6) PIVOT PINS

Page 22



7) LOCKING PINS

Page 24



8) LOCKING HAMMERS

Page 27



9) HEADER LOCKS

Page 35





L&R SPARE PARTS LIST (FLATRACK PART)

10) TWISTLOCKS

Page 38



11) SPRINGS

Page 41



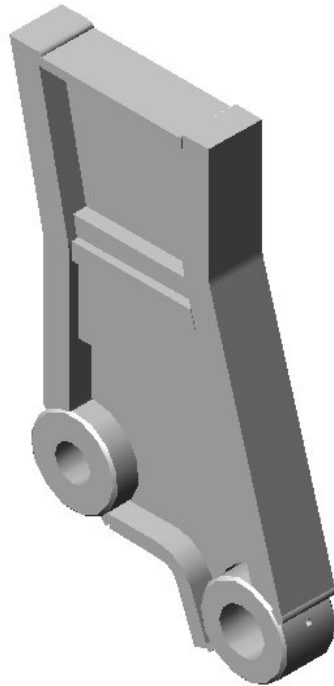
12) POST EXTENDERS

Page 51



QUOTATION REQUEST

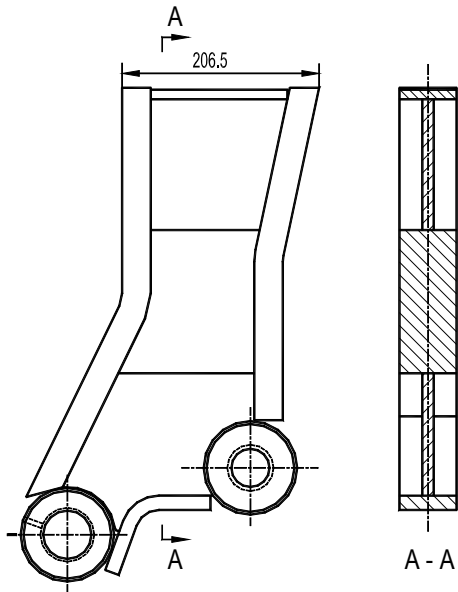
Page 53



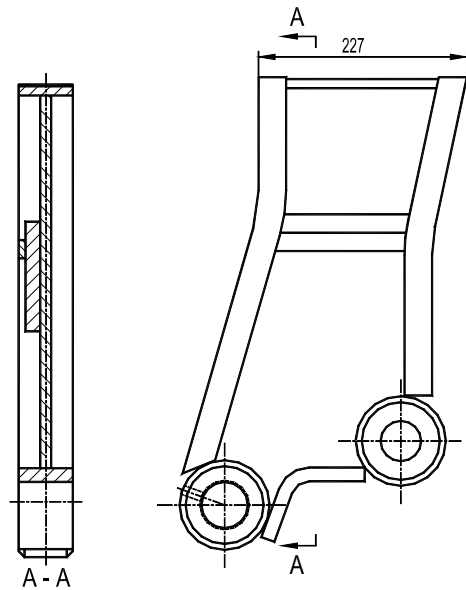
SECTION 1

INNER HINGES

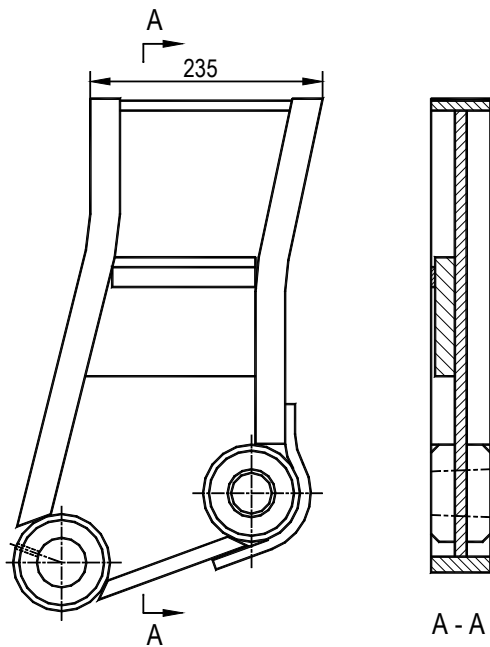
Issue B



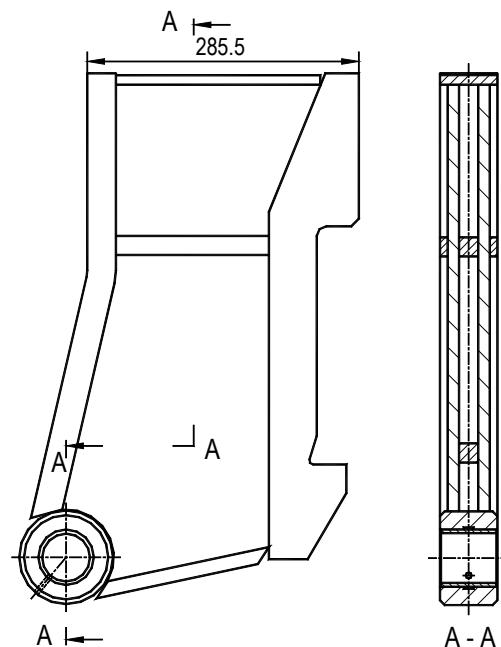
Part Name: **Inner - UASC**
 Drawing No: Inner (180) UA V3.3
 Weight: 30.6Kg



Part Name: **Inner-Standard Domino**
 Drawing No: Inner (200) SD V3.3B
 Weight: 26.5Kg



Part Name: **Inner-Midi Domino**
 Drawing No: Inner (220) MD V3.3B
 Weight: 28.15Kg



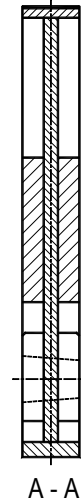
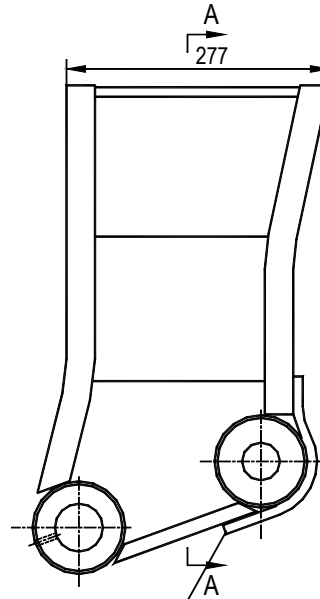
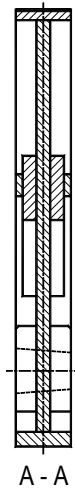
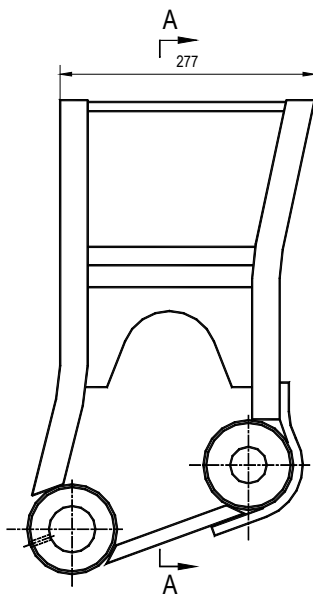
Part Name: **Inner-Square Lock**
 Drawing No: Inner (250) SL V3.3
 Weight: 42.2Kg



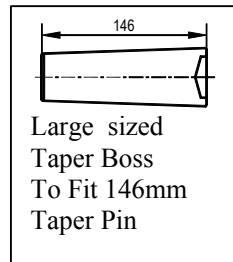
SECTION 1

INNER HINGES

Issue B

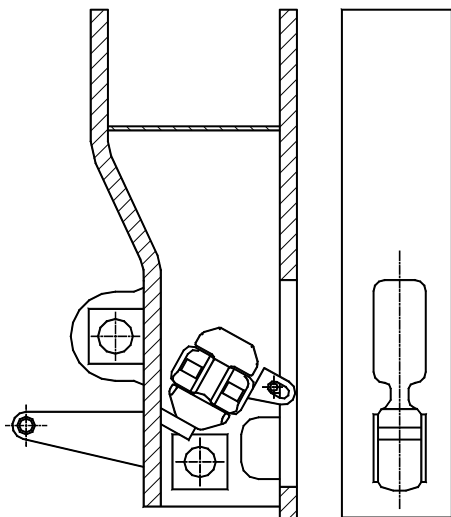


Part Name: **Inner-XL Domino**
 Drawing No: Inner (260) XL V3.3B
 Weight: 33.4Kg

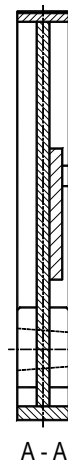
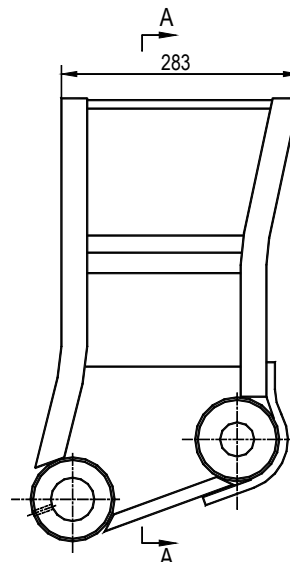


Large sized
 Taper Boss
 To Fit 146mm
 Taper Pin

Part Name: **Inner-XL Domino**
 Drawing No: Inner (260) XL
 V3 0-V3 2



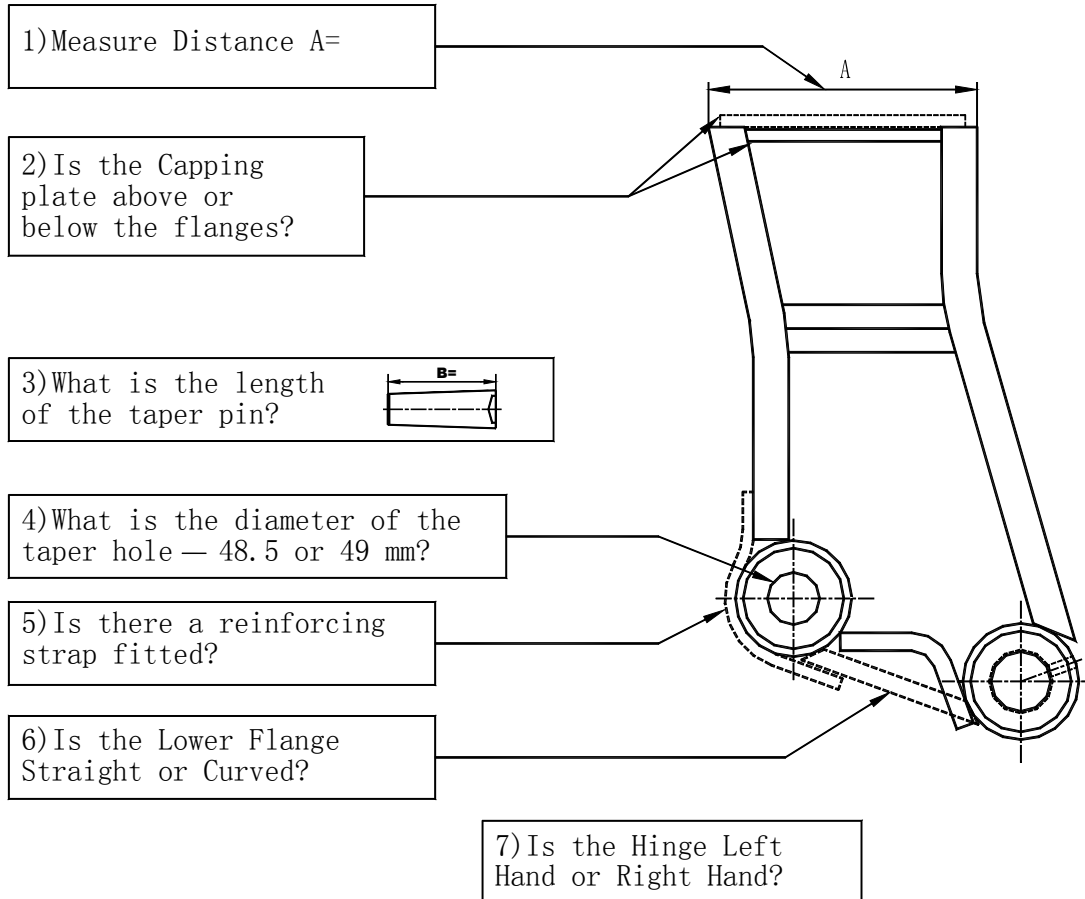
Part Name: **Inner- MK2**
 Drawing No: Inner(250) M2 V2.2
 Weight: 75Kg



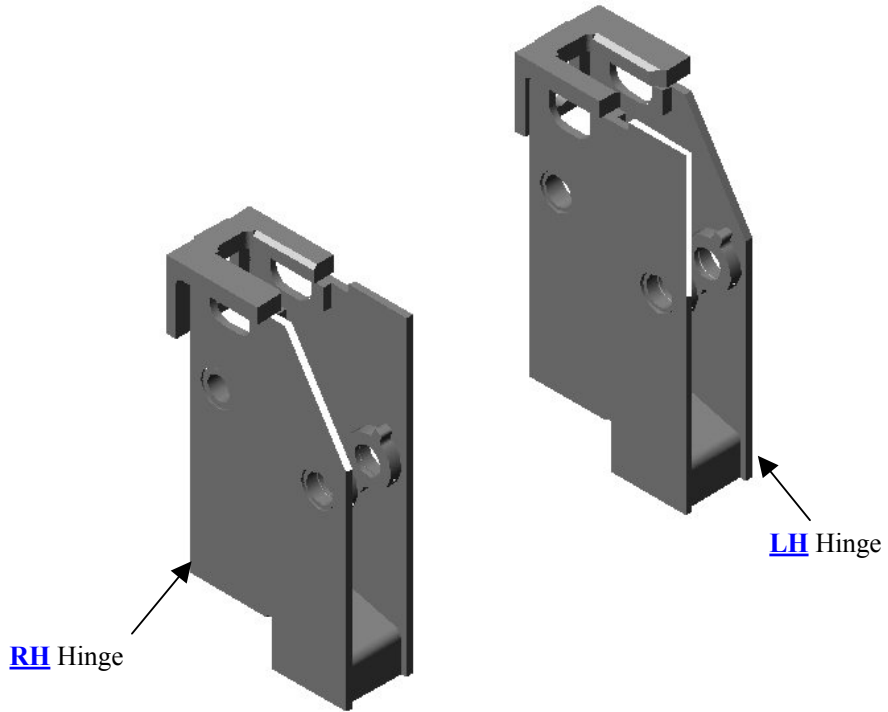
Part Name: **Inner- HF**
 Drawing No: Inner Hf



QUESTIONNAIRE



Please refer to “[INTRODUCTION](#)” for [LH](#) and [RH](#).

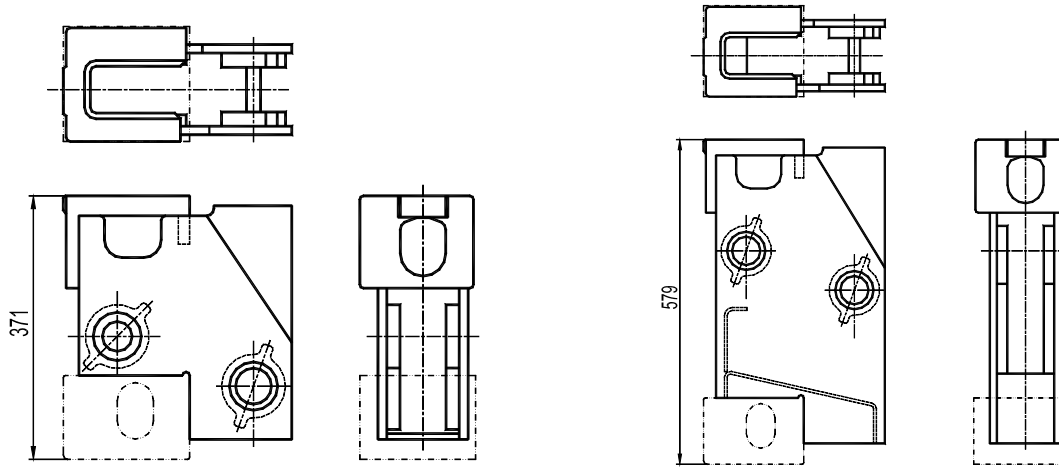


SECTION 2

OUTER HINGES

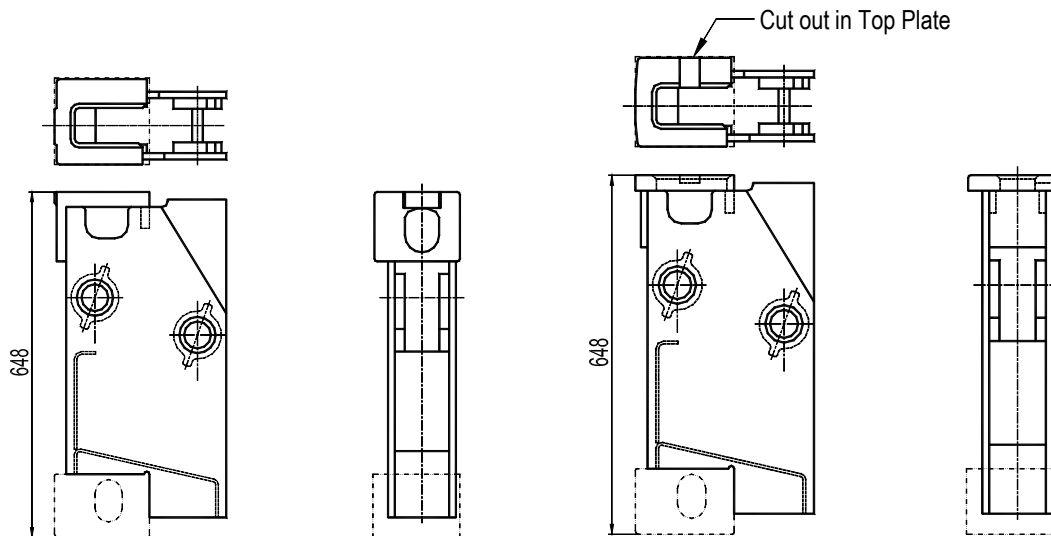
Issue B

(Note: Corner Castings Not Supplied)



Part Name: **Outer - 20ft standard Domino**
 Drawing No: Outer (371) SD v3.3
 Weight: 21.5Kg

Part Name: **Outer - 5 in 9ft6in**
 Drawing No: Outer (579) SD v3.3
 Weight: 40.61Kg



Part Name: **Outer - 40ft Standard Domino**
 Drawing No: Outer (648) SD v3.3
 Weight: 37.9Kg

Part Name: **SD44-M10500 Outer**
 Drawing No: SD44-M10500
 Note: This is the same as Outer 648 SD v3.3, but the Top Plate has a recess Cut Out on one side.

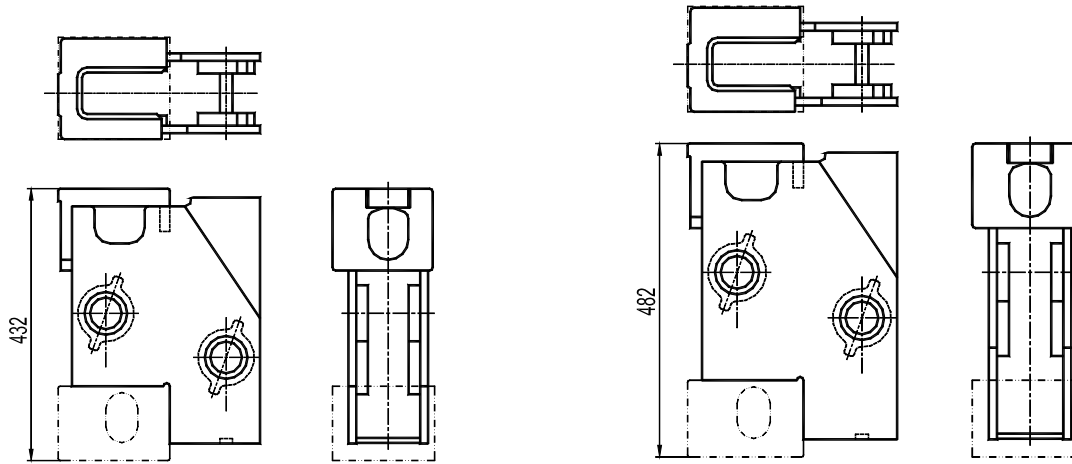


SECTION 2

OUTER HINGES

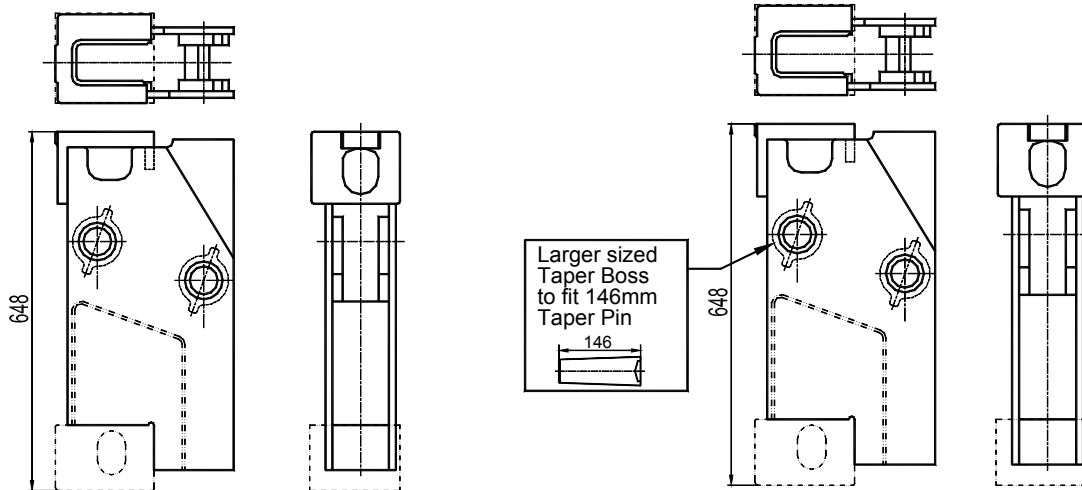
Issue B

(Note: Corner Castings Not Supplied)



Part Name: **Outer -Midi Domino 6 in 8ft6in**
 Drawing No: Outer (432) MD v3.3
 Weight: 26Kg

Part Name: **Outer -Midi Domino 6 in 9ft6in**
 Drawing No: Outer (482) MD v3.3
 Weight: 28.8Kg



Part Name: **Outer -XL Domino**
 Drawing No: Outer (648) XL v3.3
 Weight: 37.7Kg

Part Name: **Outer - Early XL Domino**
 Drawing No: Outer 648 XL v3.0 – 3.2
 Weight: 37.7Kg

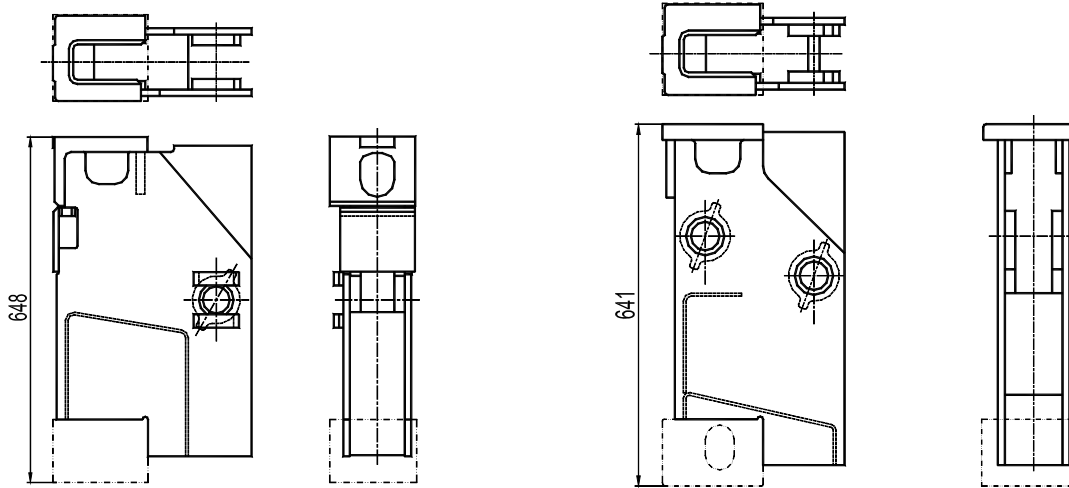


SECTION 2

OUTER HINGES

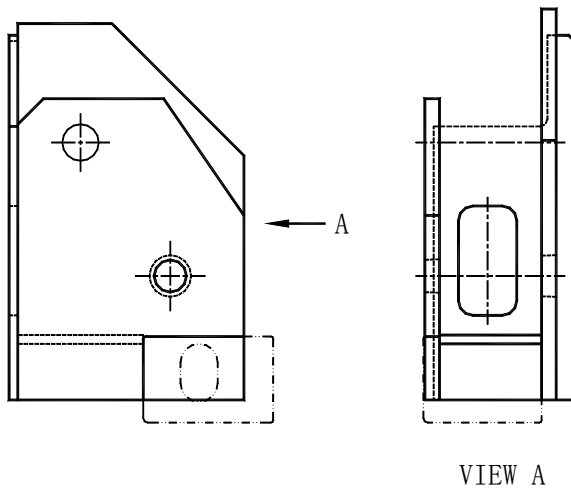
Issue B

(Note Corner Castings Not Supplied)



Part Name: **Outer -Square Lock**
Drawing No: Outer (648) SL v3.3
Weight: 43.8Kg

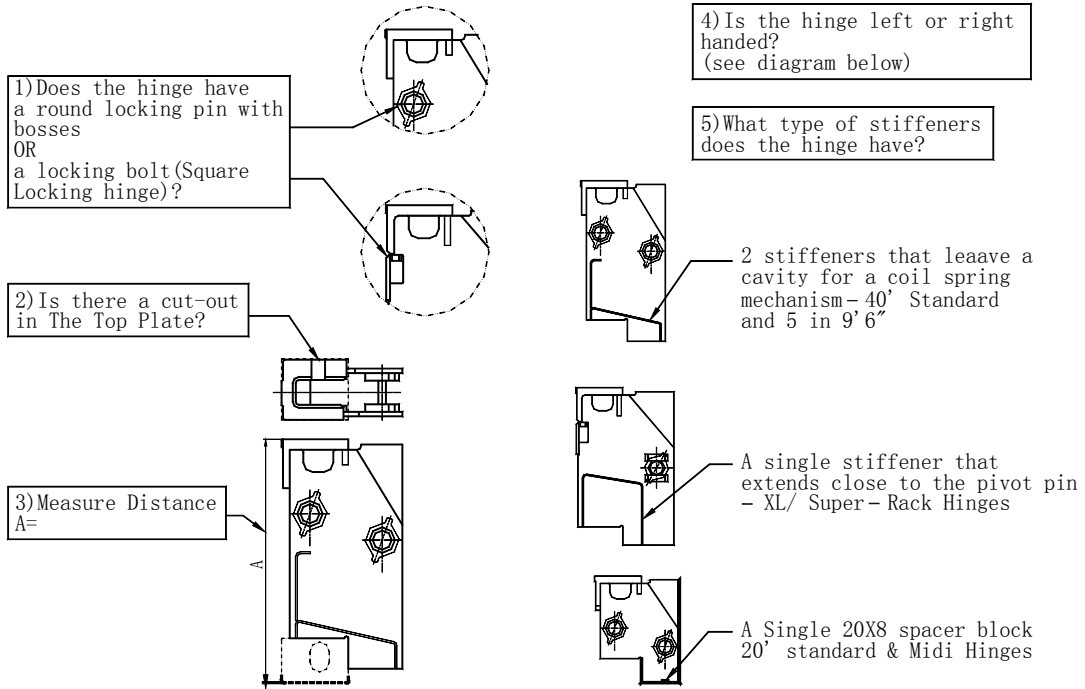
Part Name: **Outer -Henred Fruehauf**
Drawing No: Outer (641) HF



Part Name: **Outer - MK2**
Drawing No: OUTER (648) M2 v2.2
Weight: 21.6Kg

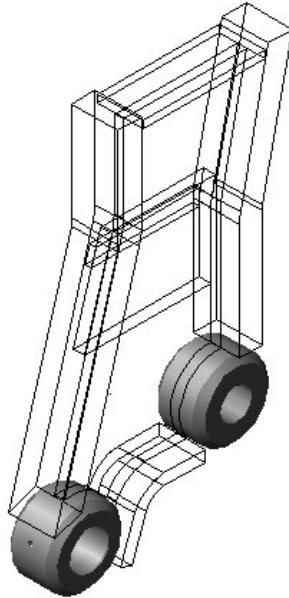


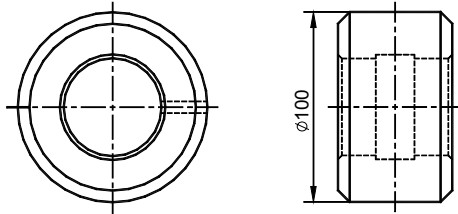
QUESTIONNAIRE



Please refer to "[INTRODUCTION](#)" for [LH](#) and [RH](#).

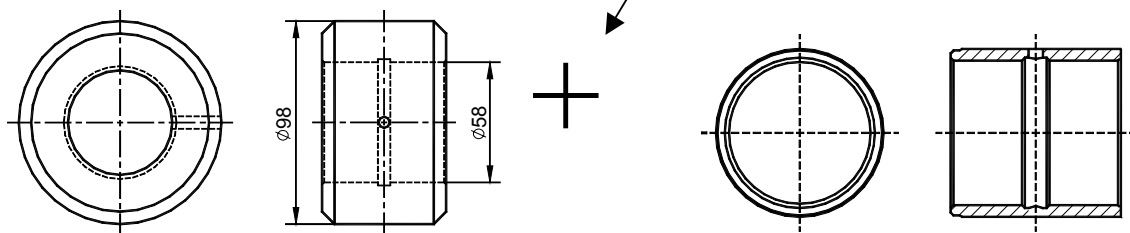






Part Name: **Pivot Boss**
 Drawing No: CC500
 Weight: 2.47Kg

Note: **These parts
 Need to be supplied
 together**



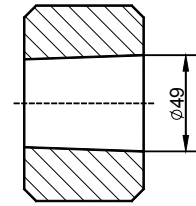
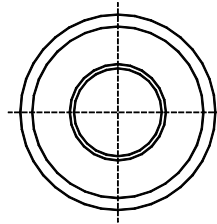
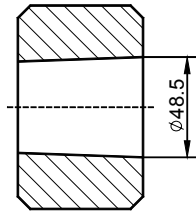
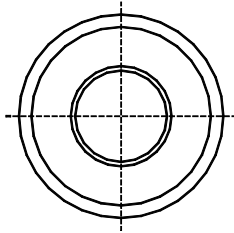
Part Name: **Pivot Boss- Used on
 Square Lock Hinge**
 Drawing No: CC 501
 Weight: 2.23Kg
 Note: Used only on square lock hinge

Part Name: **Pivot Bush**
 Drawing No: CC820
 Weight: 0.32Kg
 Note: To go with CC501 Pivot Boss used
 On Square Lock Hinges

SECTION 3

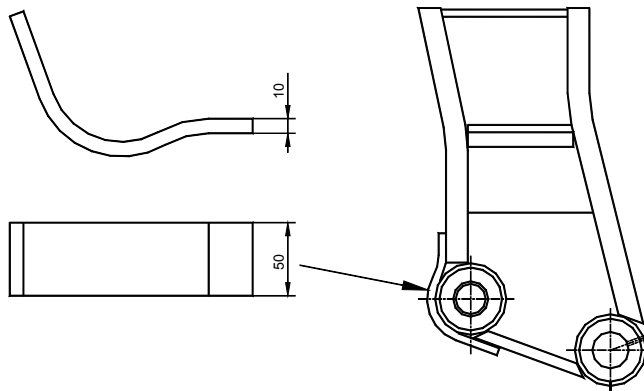
INNER BOSSES

Issue B



Part Name: **Taper Boss**
Drawing No: CC510
Weight: 2.82Kg

Part Name: **Lg Taper Boss**
Drawing No: CC511
Weight: 2.82Kg
Note: Use with 146mm Taper Pin only

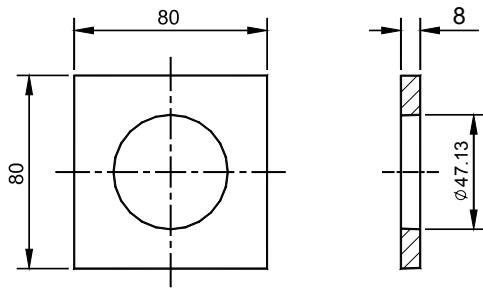


Part Name: **Reinforcement Strap**
Drawing No: CC370
Weight: 0.86Kg
Note: This must be used with all
Repaired Taper Boss

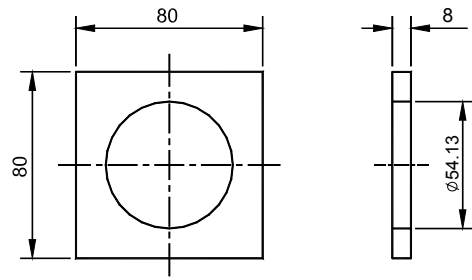
SECTION 3

INNER BOSSES

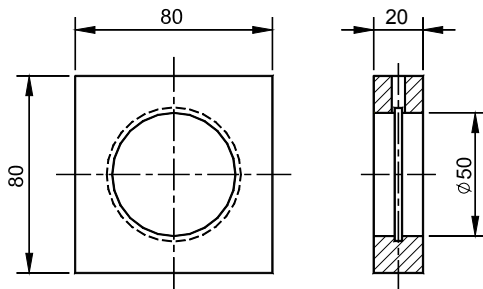
Issue B



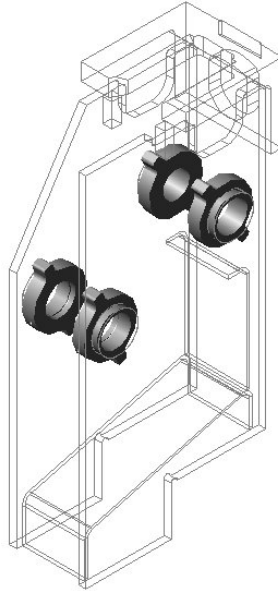
Part Name: **Taper Boss Sml**
Drawing No: CC521
Weight: 0.29Kg
Note: Used for MK2 only

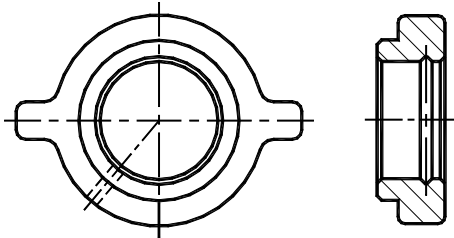


Part Name: **Taper Boss Lrg**
Drawing No: CC522
Weight: 0.26Kg
Note: Used for MK2 only

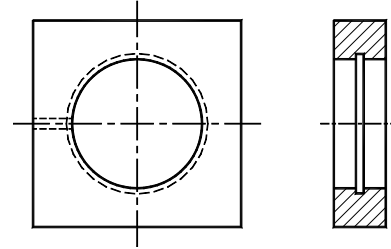


Part Name: **Pivot Boss**
Drawing No: CC502
Weight: 0.35Kg
Note: Used for MK2 only

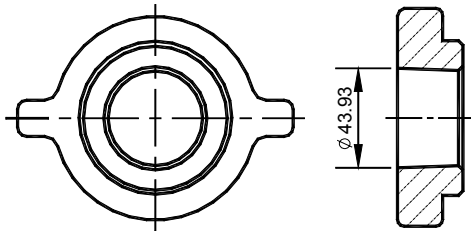




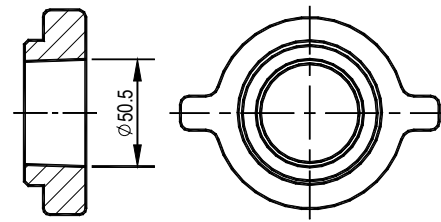
Part Name: **Pivot Boss**
 Drawing No: CC600.A
 Weight: 0.65Kg



Part Name: **Square Pivot Boss**
 Drawing N0: SD44-M10500 / 6



Part Name: **Taper Boss Small**
 Drawing No: CC610.B
 Weight: 0.96Kg
 Note: All hinges except XL hinges
 manufactured prior to June 2004

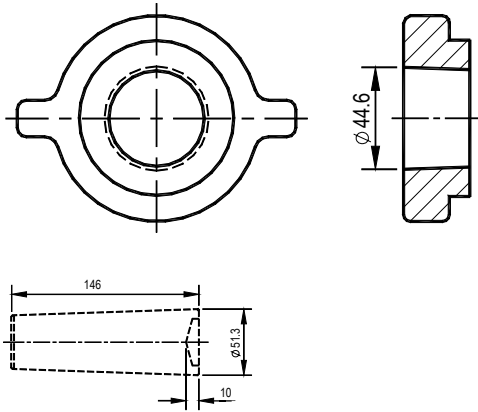


Part Name: **Taper Boss Large**
 Drawing No: CC620.B
 Weight: 0.89Kg
 Note: All hinges except XL hinges
 manufactured prior to June 2004

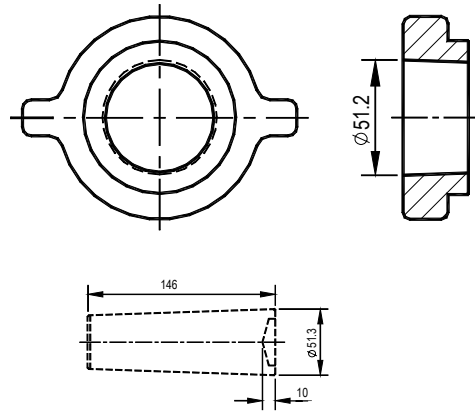
SECTION 4

OUTER BOSSES

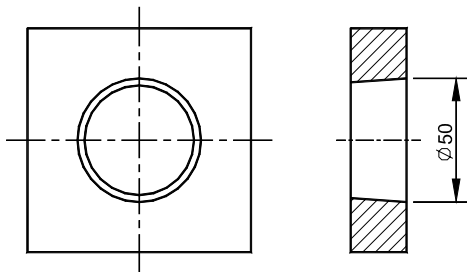
Issue B



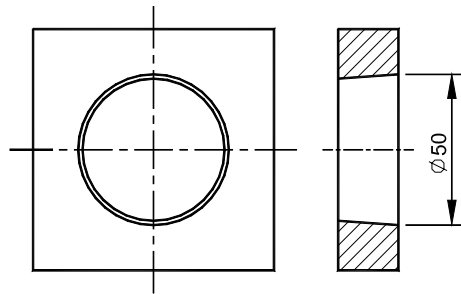
Part Name: **Lg Taper Boss Small**
 Drawing No: CC611.A
 Note: Use with 146mm Taper Pins only



Part Name: **Lg Taper Boss**
 Drawing No: CC621.A
 Note: Use with 146mm Taper Pins only

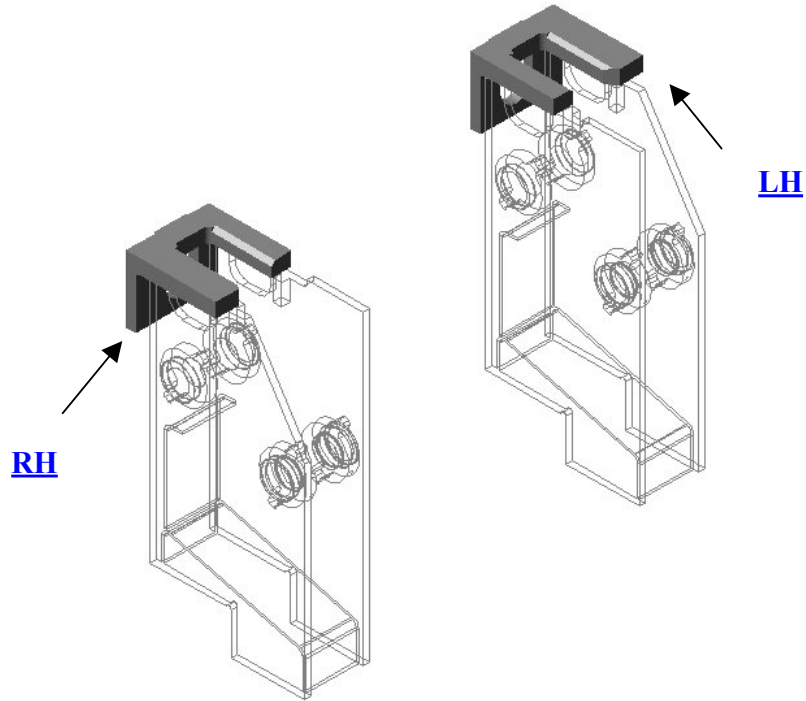


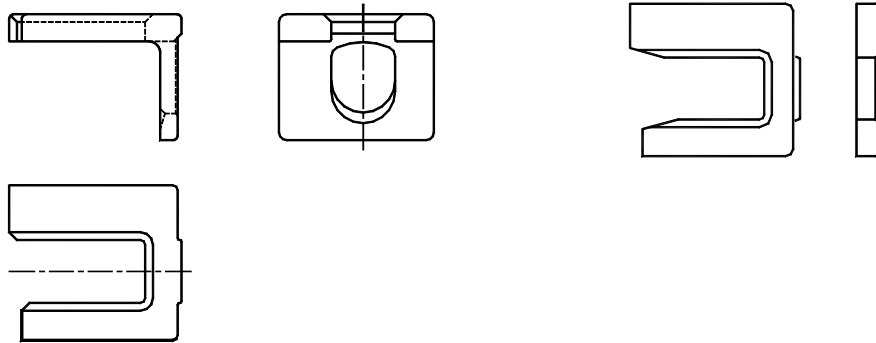
Part Name: **Square Taper Boss Small**
 Drawing No: SD44-M10500 / 8



Part Name: **Square Taper Boss Large**
 Drawing No: SD44-M10500 / 7

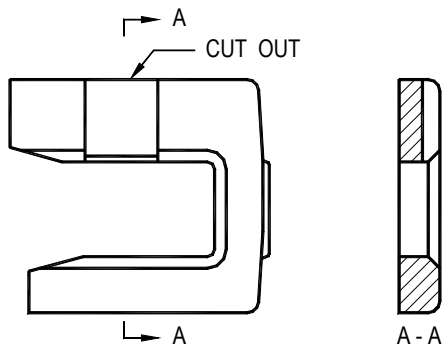






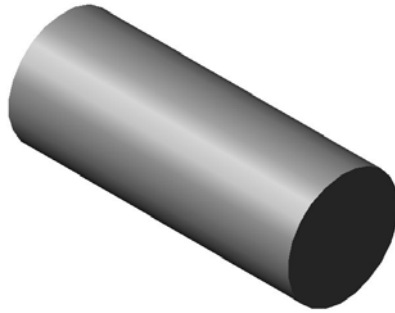
Part Name: **Top Plate**
 Drawing No: CC700
 Weight: 5.72Kg

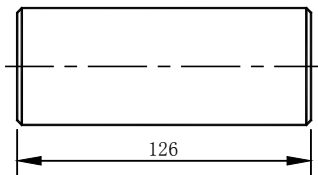
Part Name: **Top Plat – with out slot**
 Drawing No: SD44-M10500 / 1
 Weight: 4.9Kg



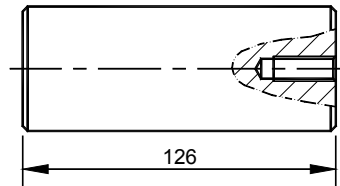
Part Name: **Top Plat – with slot**
 Drawing No: SD44-M10500 / 2
 Weight: 4.7Kg

IMPORTANT – Please state whether the top plate is a **LH or RH**. Refer to Diagram on Page 2.

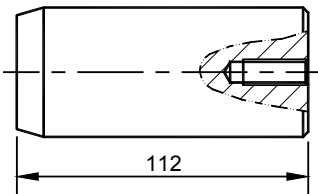




Part Name: **Pivot Pin**
 Drawing No: CC200
 Weight: 1.94Kg



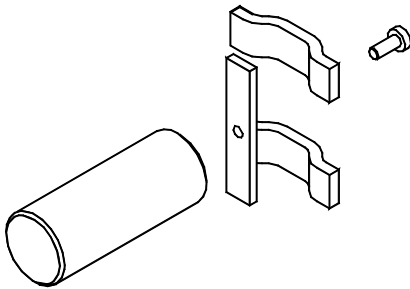
Part Name: **Pivot Pin Removable**
 Drawing No: CC201
 Weight: 1.93Kg



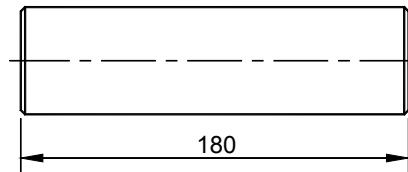
Part Name: **Pivot Pin Removable**
 Drawing No: CC202.A
 Note: Not currently in production – spares only.



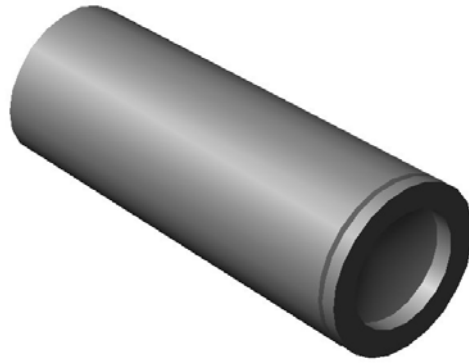
Part Name: **Pivot Pin**
 Drawing No: CC203
 Note: Thomas Storey Removable
 Not currently in production – spares only.

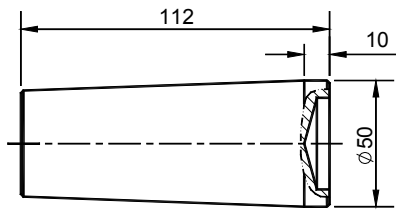


Part Name: **Removable Pivot Pin Kit.**
 Includes CC201 – Pivot Pin as shown above
 Weight: 2.52Kg

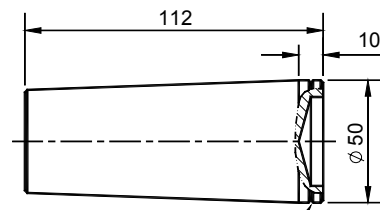


Part Name: **Pivot Pin – MK2**
 Drawing No: CC204
 Weight: 2.77Kg
 Note: Used for MK2 Only



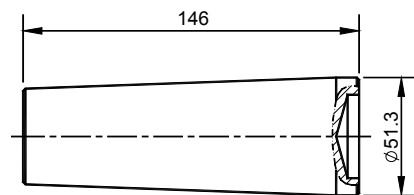


Part Name: **Taper Pin**
 Drawing No: CC100
 Weight: 1.59Kg

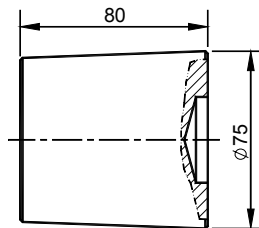


NOTE: Indent Groove for identification.

Part Name: **Taper Pin**
 Drawing No: CC101.B
 Weight: 1.59Kg
 Note: High Yield Steel. Used on all Midi, XL & Super-Rack Hinges after June – Oct 2004



Part Name: **Taper Pin**
 Drawing No: CC102.A
 Weight: 1.93Kg
 Note: Larger diameter. Goes with XL hinges manufactured prior to June – Oct 2004.



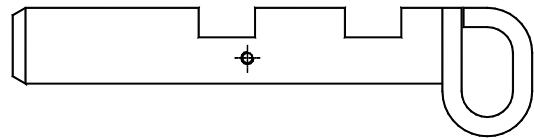
Part Name: **Taper Pin - Traverz**
 Drawing No: CC103.A or DB0-001
 Weight: 2.6kg



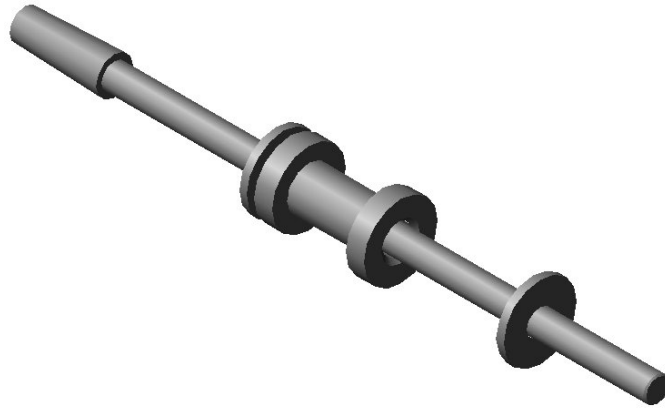
Part Name: **Taper Pin Henred Fruehauf 200mm**
 Drawing No: CC104.A or CC-0467
 Weight: 3Kg

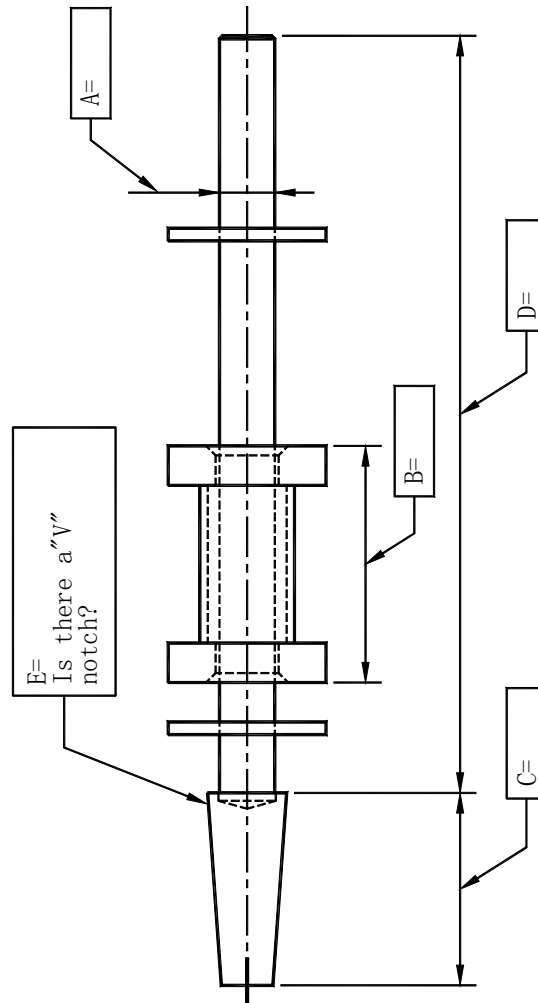


Part Name: **Taper Pin - MK2**
 Drawing No: CC105
 Weight: 3.03Kg
 Note: Used for MK2 Only



Part Name: **Locking Bolt**
 Drawing No: LOCKING BOLT SL V3.3
 Weight: 4.3Kg
 Note: Used on Square Lock Hinges

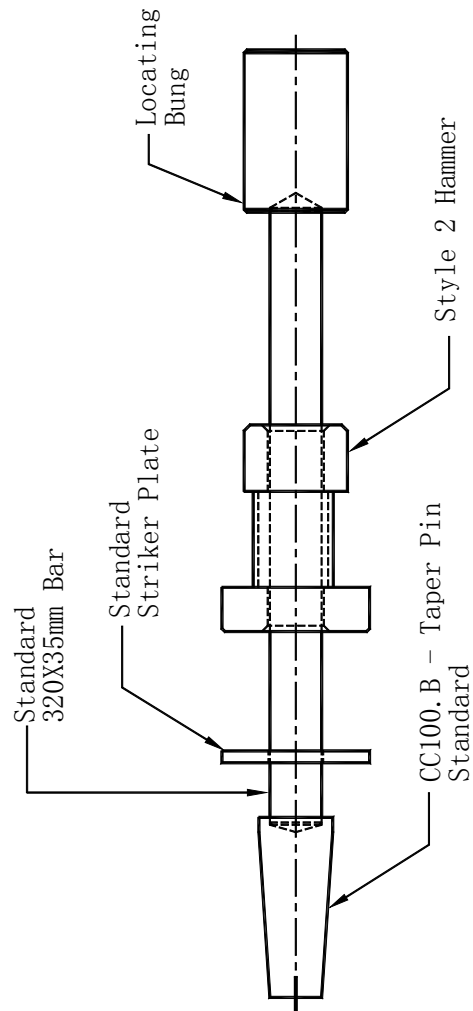




Please fill in dimensions A, B, C, and D so that we can supply the right part, we also need to know if the Taper Pin has a "V" notch about its circumference (approx 0.5mm deep).

Style 1 / All Inquires

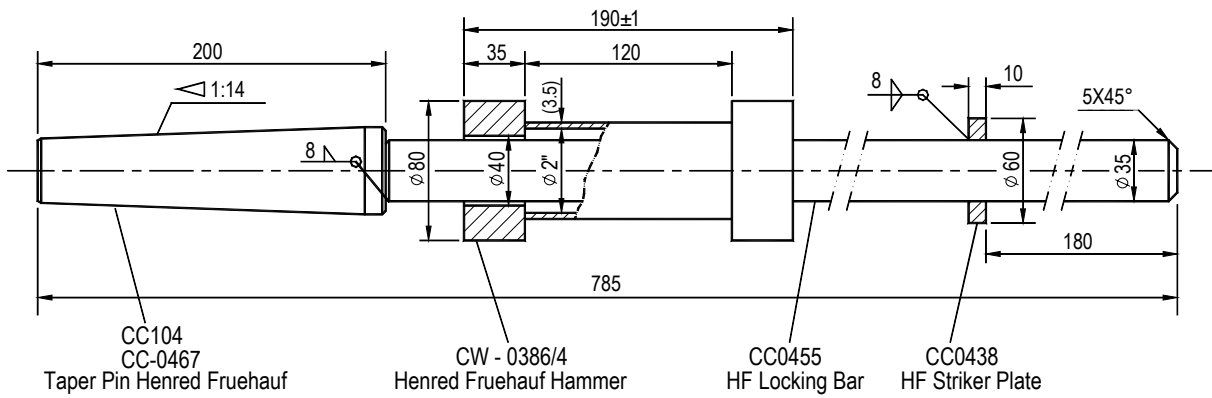
For all inquires and orders, the buyer must supply answers A to E.



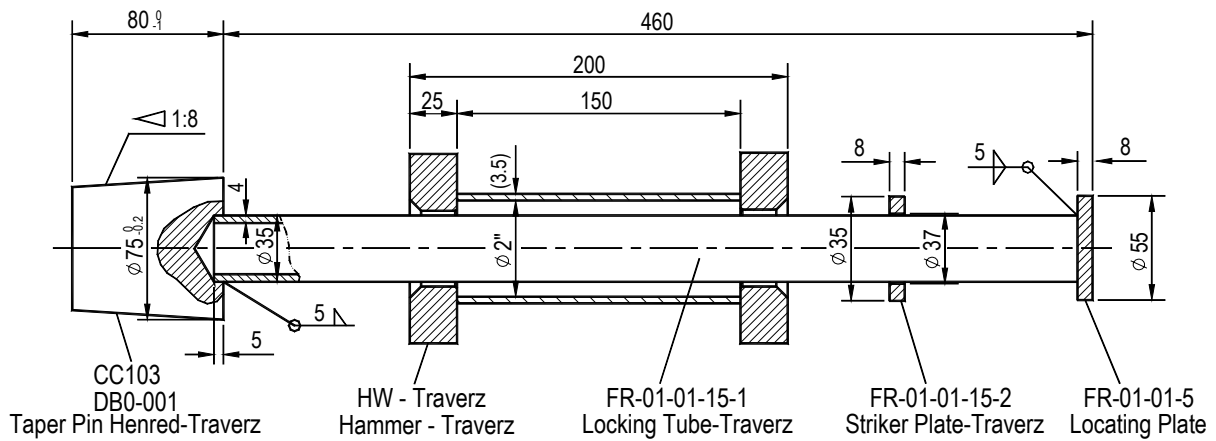
Locking Hammer Style 2– S107-2508

10.2 kg

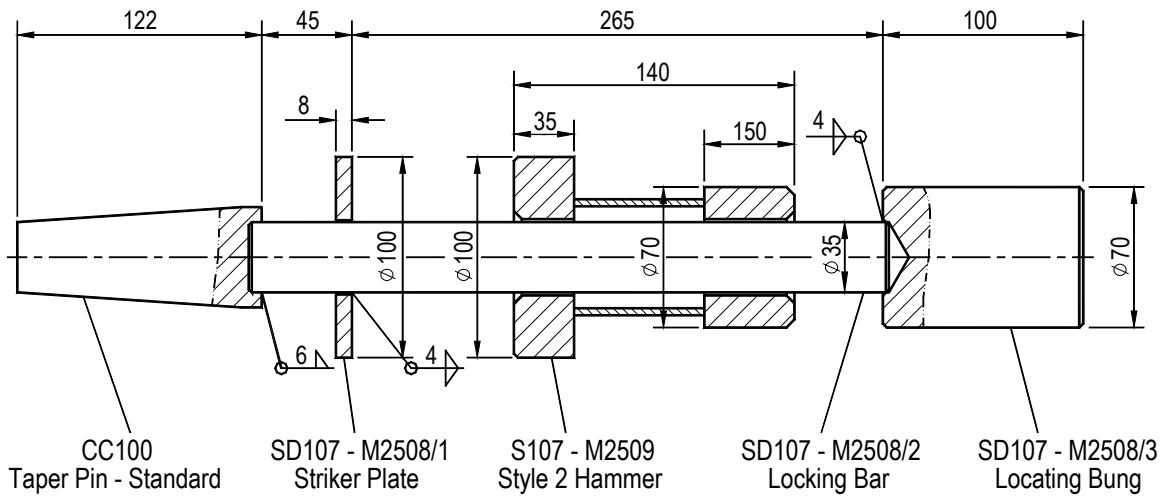




Part Name: **Henred Fruehauf Locking Hammer**
 Drawing No: CW-0386
 Weight: 10.1Kg



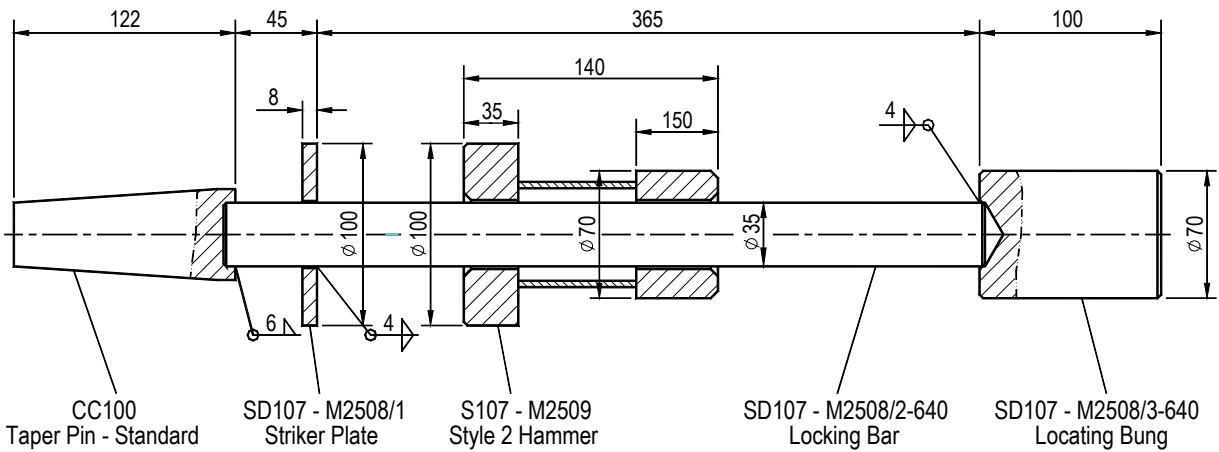
Part Name: **Traverz Locking Hammer**
 Drawing No: LK-HM-Traverz
 Weight: 7.65Kg



Part Name: **Locking Hammer style 2**

Drawing No: SD107-M2508

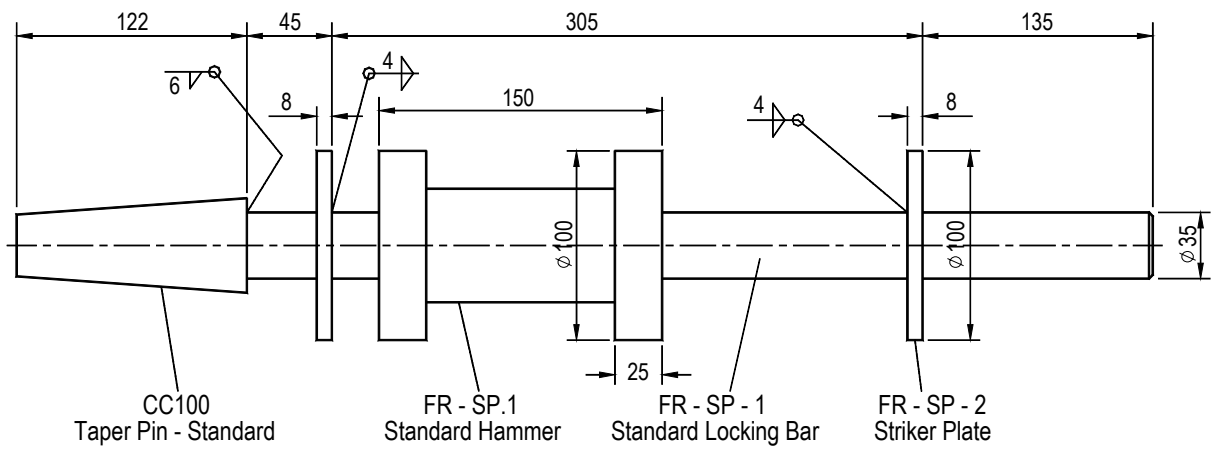
Weight: 9.14Kg



Part Name: **Locking Hammer style 2 (640 mm Bar)**

Drawing No: SD107-M2508 - 640

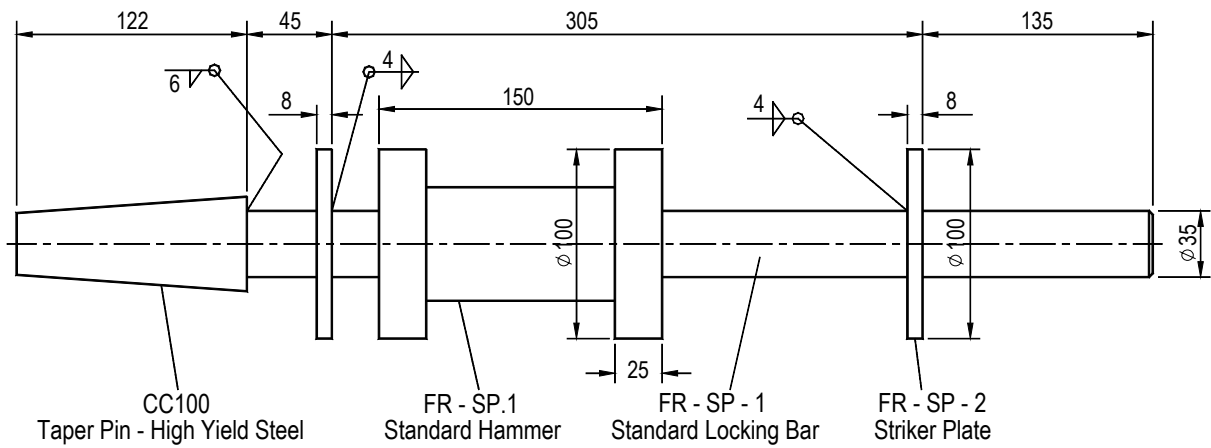
Weight: 10.2Kg



Part Name: **Standard Locking Hammer**

Drawing No: FR-SP

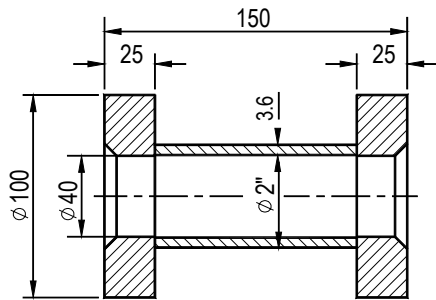
Weight: 9.3Kg



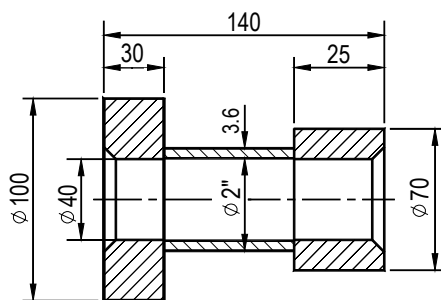
Part Name: **XL Locking Hammer**

Drawing No: FR-SP-XL

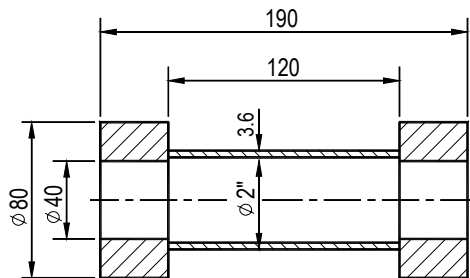
Weight: 8.8Kg



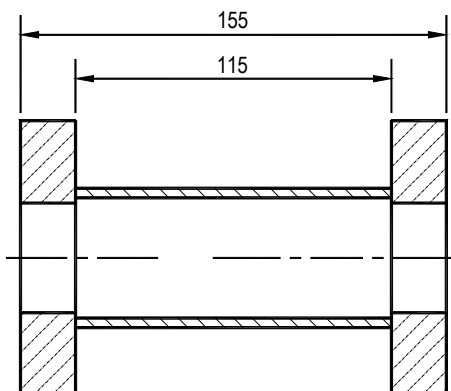
Part Name: **Standard Hammer /
Style 1 Hammer**
Drawing No: FR-SP.1 / SD44-M2509
Weight: 2.98 kg



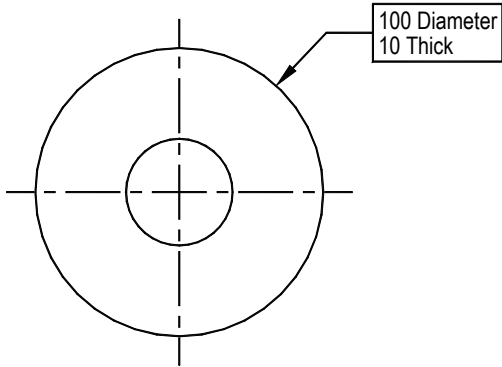
Part Name: **Style 2 Hammer**
Drawing No: S107-2509
Weight: 3.3kg



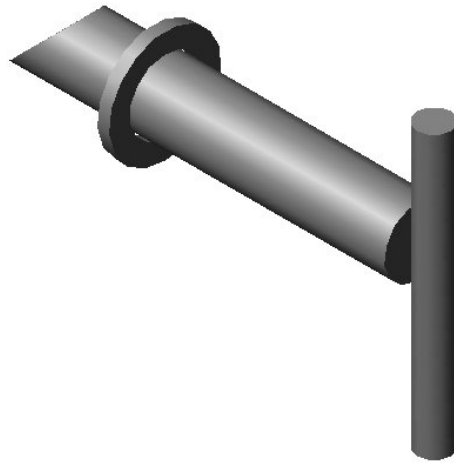
Part Name: **Henred Fruehauf
Hammer**
Drawing No: CW-0387
Weight: 2.6Kg



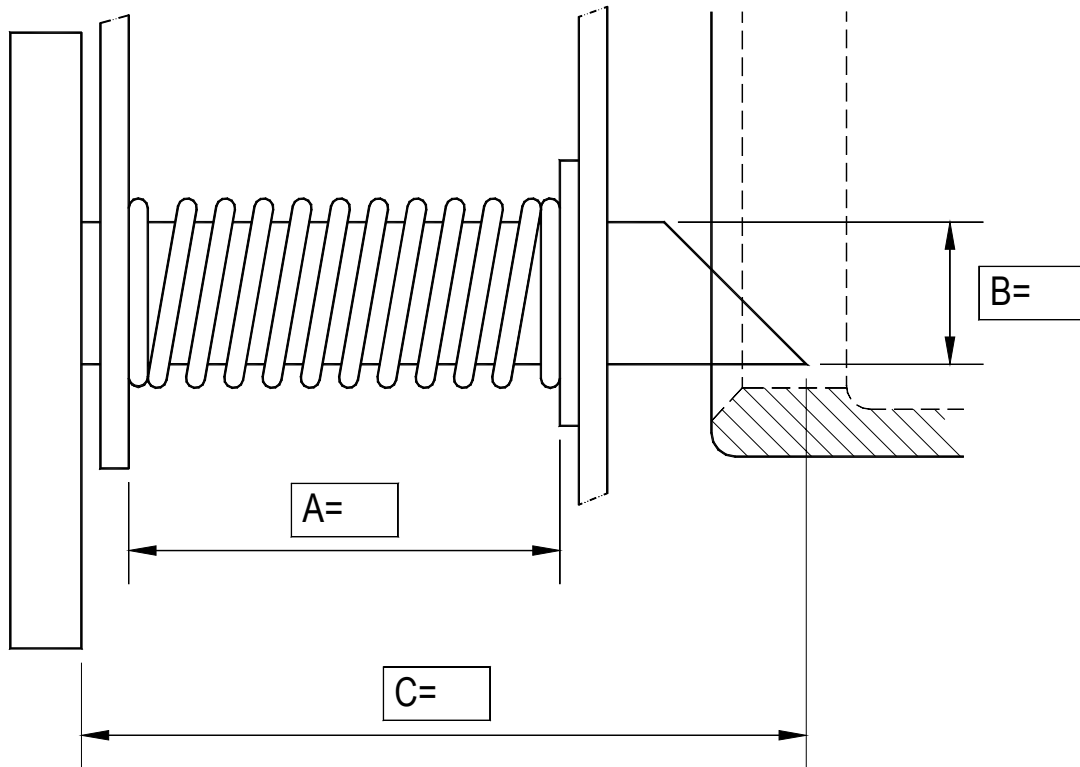
Part Name: **Sicom Hammer**
Drawing No:
Weight: 2.4Kg



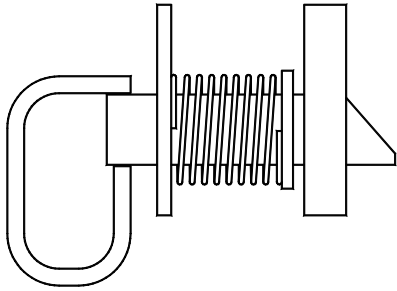
Part Name: **Striker Plate**
Drawing No: SD107-M2508/1
Weight: 0.53Kg



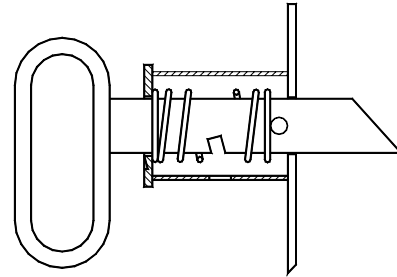
STANDARD HEADER LOCK QUESTIONNAIRE



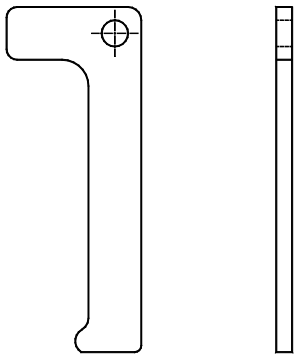
For standard header locks, please complete this questionnaire.



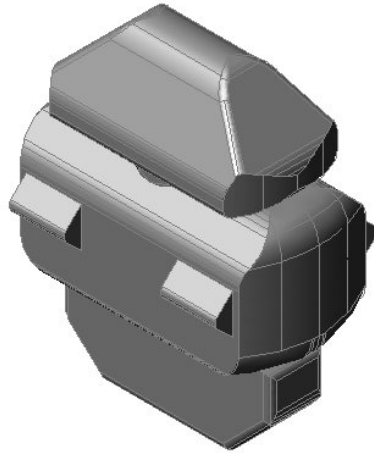
Part Name: **Henred Fruehauf Header Lock**

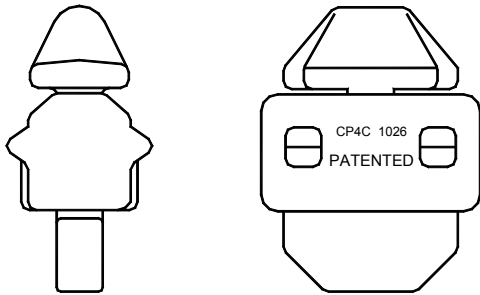


Part Name: **Sicom Header Lock**
Drawing No.:4-722
Weight: 2.9 kg

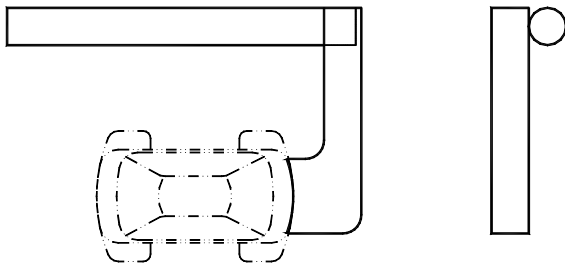


Part Name: **Hapag Lloyd Gravity Catch**

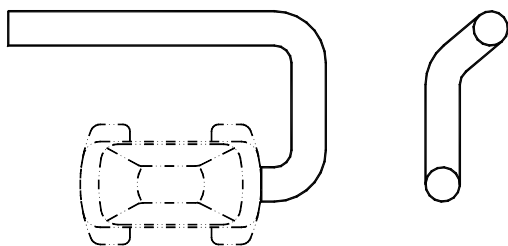




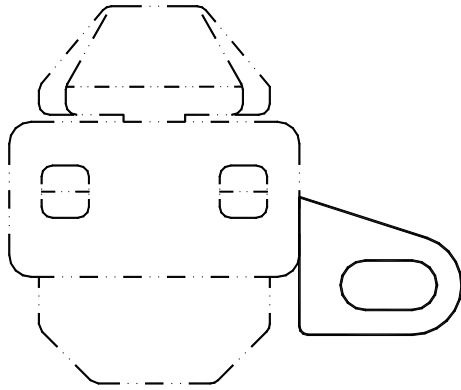
Part Name: **Twistlock**
Drawing No: CP4C-1026
Weight: 3.00kg



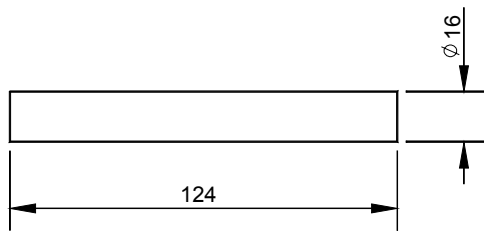
Part Name: **Twistlock Flat Arm**
Drawing: FR-ST-SF-1
Weight: 0.5 kg



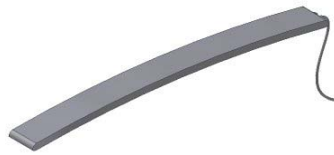
Part Name: **Twistlock Arm**
Drawing No: FR-ST-1
Weight: 0.81 kg



Part Name: **Twist lock Arm**
Drawing No: CC900
Weight: 0.34kg
Note: Used for MK2



Part Name: **Twist lock Axis**
Drawing No: CC901
Weight: 0.2Kg
Note: Used for MK2



Hook Orientation

1.

2.

3.

FLATRACK TYPE _____

REFERENCE NUMBER _____

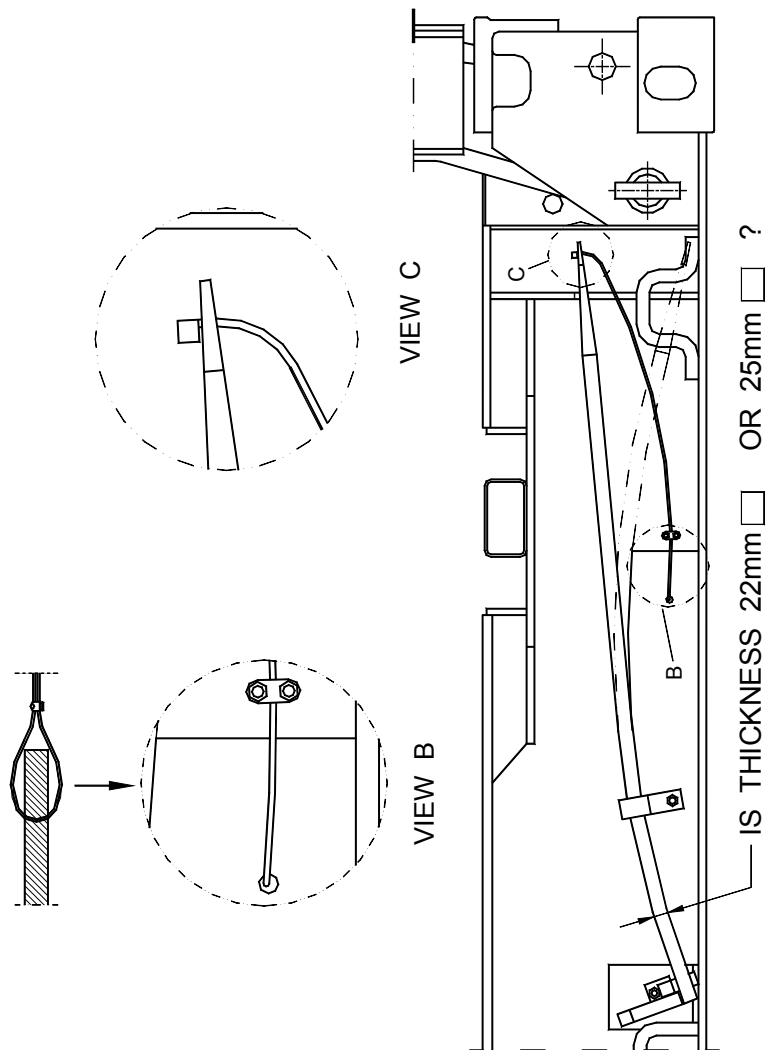
YEAR OF MANUFACTURER _____

MANUFACTURER _____

SERIAL NUMBER _____

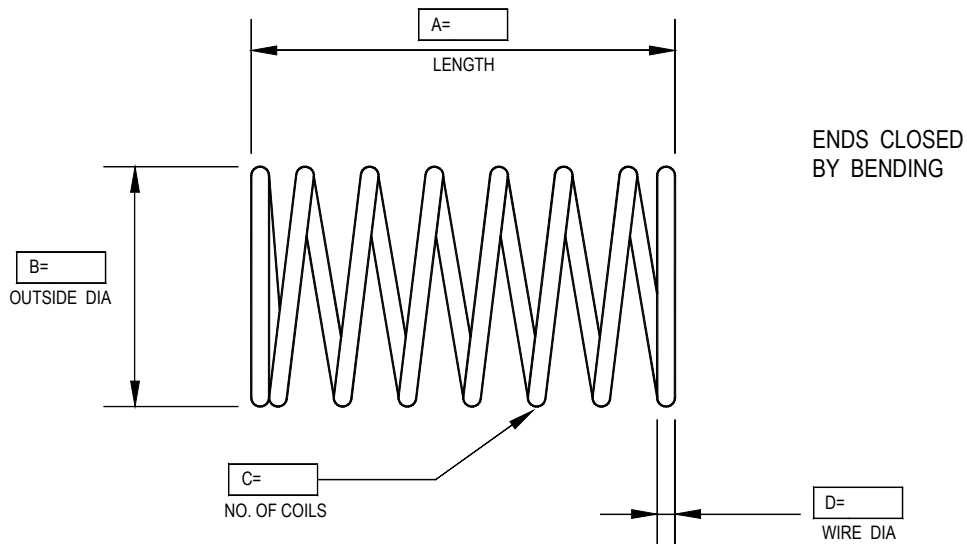
COUNTERBALANCE SPRING – COIL TYPE
PLEASE FILL IN THE QUESTIONNAIRE





COUNTERBALANCE SPRING - LEAF TYPE
PLEASE FILL IN THICKNESS

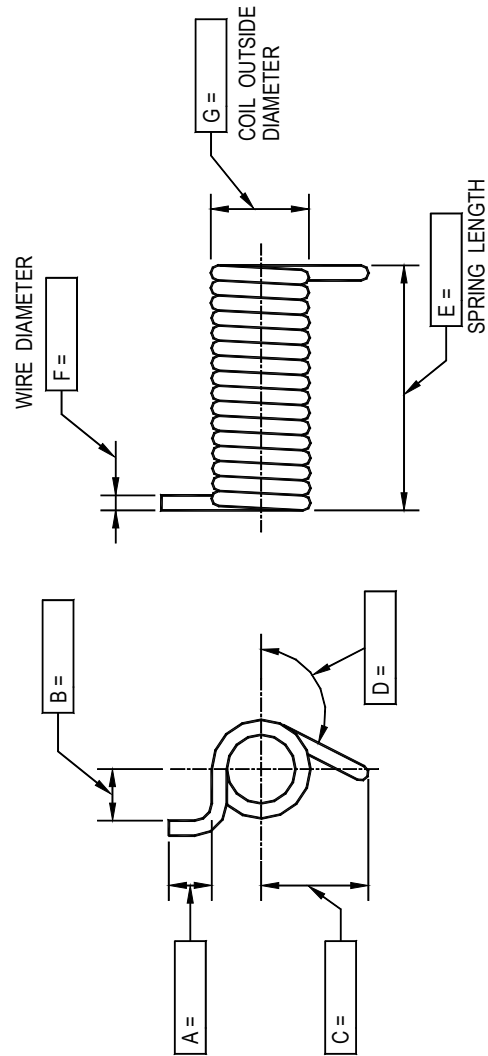
HEADER LOCK SPRING



PLEASE FILL IN DIMENSIONS A,
B, C & D SO THAT THE CORRECT
PART CAN BE SUPPLIED.

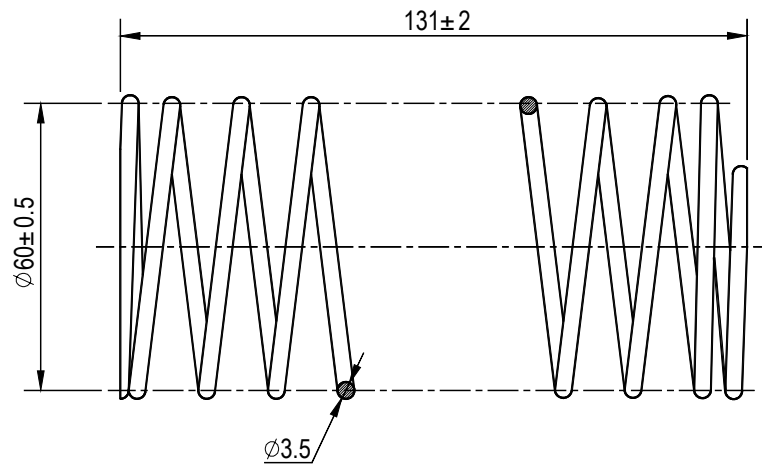
**HEADER LOCK SPRING – PLEASE COMPLETE
THE QUESTIONNAIRE**

LATCH SPRING

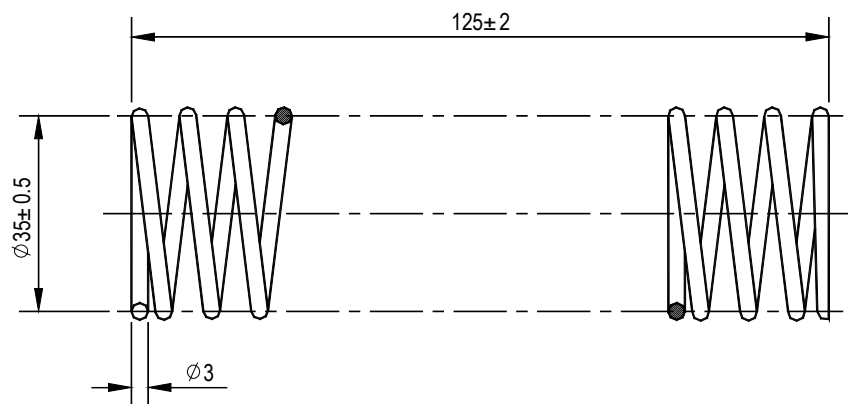


PLEASE SUPPLY DIMENSIONS A - G SO THAT WE CAN SUPPLY THE CORRECT PART.

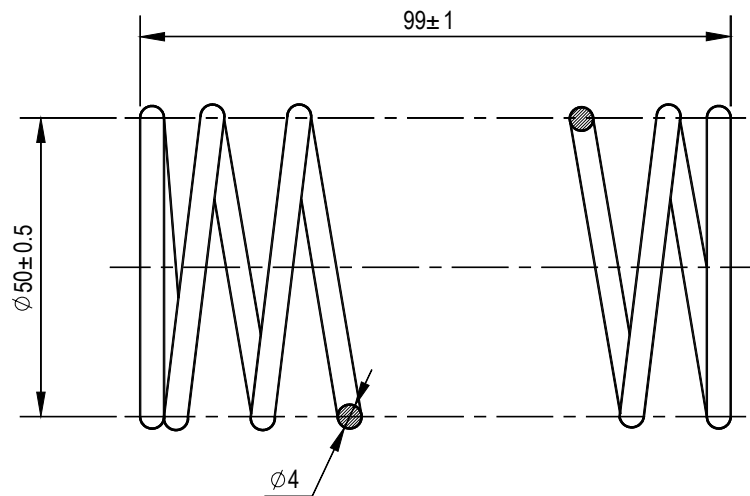
LATCH SPRING – PLEASE COMPLETE THE QUESTIONNAIRE



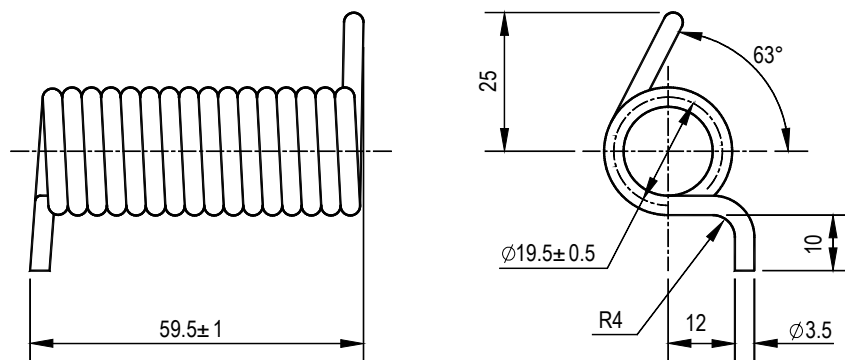
Part Name: **HF Header Lock Spring**
Drawing No: CP0693
Total Circles : 8.5
Weight: 0.11Kg



Part Name: **SD Header lock Spring**
Drawing No: HLCS-SD
Total Circles : 13.5
Weight: 0.08Kg



Part Name: **SICOM Spring**
 Drawing No: 4-721
 Total Circles : 5.5
 Weight: 0.15Kg

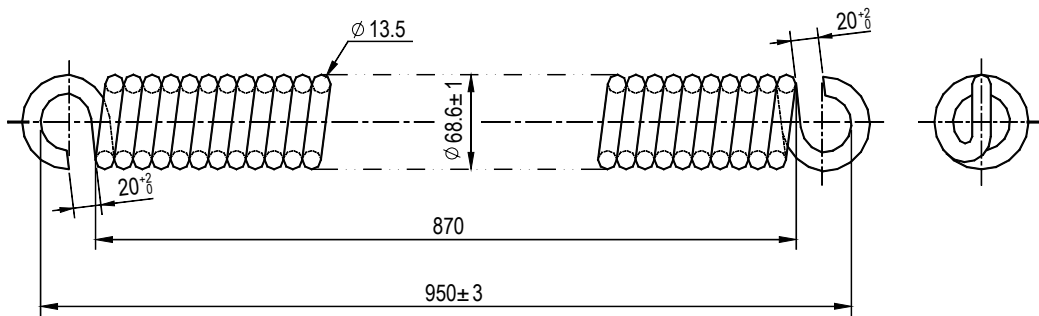


Part Name: **HF Latch Spring**
 Drawing No: PK0021
 Total Circles : 15.25
 Weight: 0.09Kg

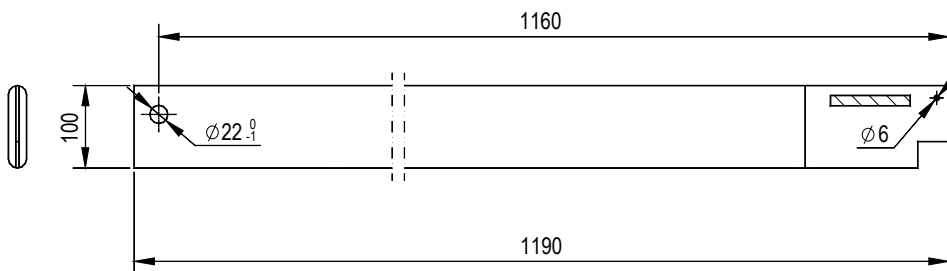
SECTION 11

SPRINGS

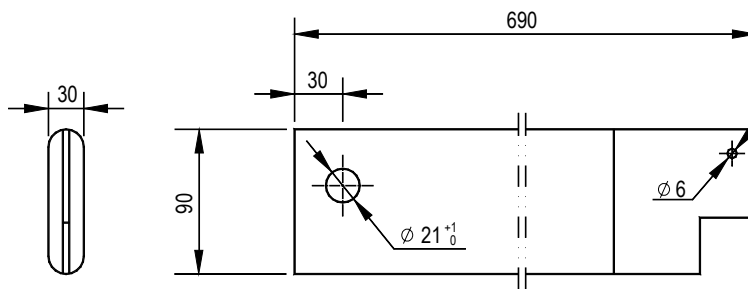
Issue B



Part Name: **SD Equation Spring**
 Drawing No: CS-01 or VS622
 Total Circles: 63.5



Part Name: **Standard Leaf Spring**
 Drawing No: HILF-01 or S97-M2202
 Weight: 18.6kg

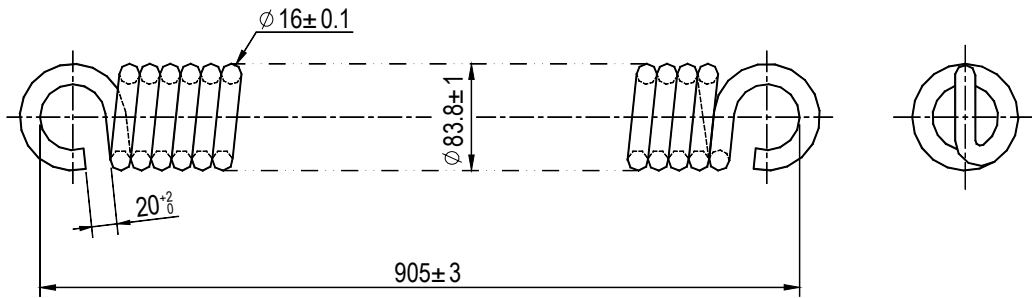


Part Name: **Leaf Spring**
 Drawing No: HILF-03
 Weight: 5.1kg

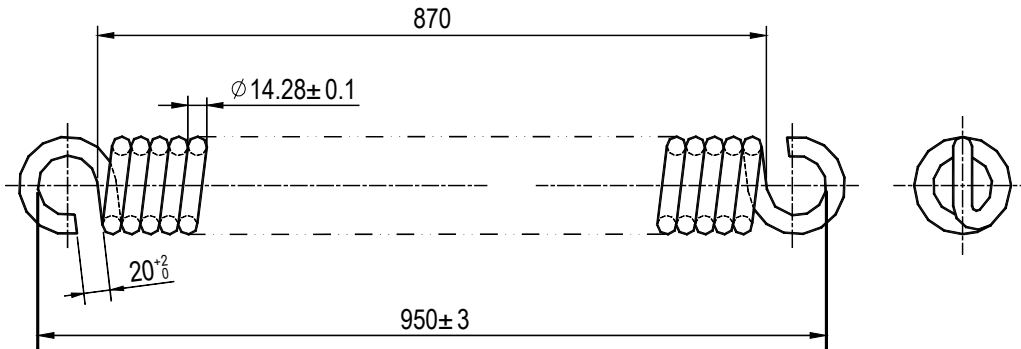
SECTION 11

SPRINGS

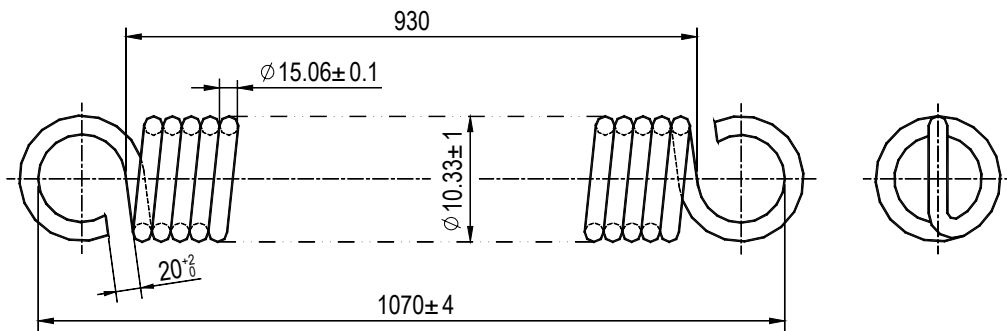
Issue B



Part Name: **WAN HAI Equation Spring**
 Drawing No: PO05WH
 Total Circles: 49

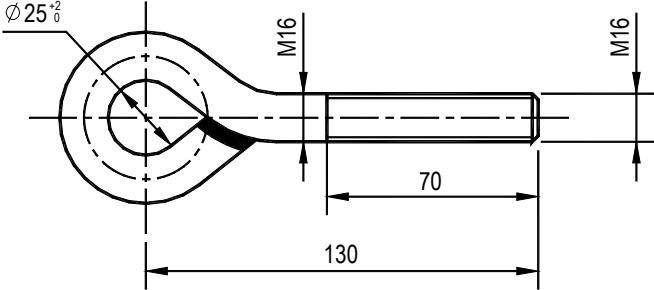


Part Name: **SICOM Equation Spring**
 Drawing No: PO06
 Total Circles: 61



Part Name: **XL Equation Spring**
 Drawing No: PO10
 Total Circles: 61





Part Name: **Eye Bolt**
Drawing No: CP0405
Weight: 0.4Kg

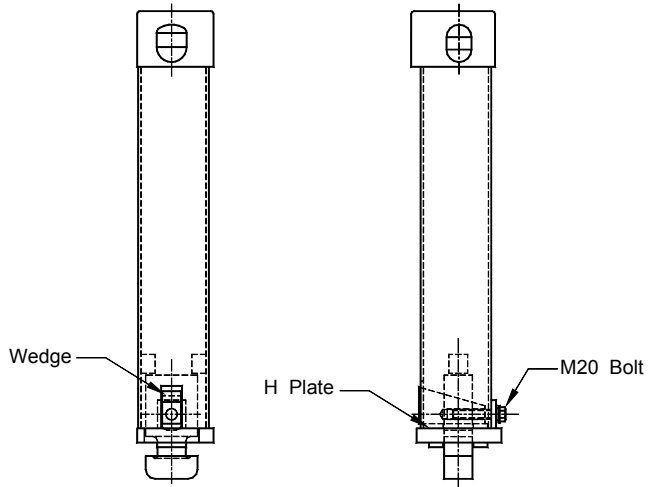




SECTION 12

POST EXTENDERS

Issue A

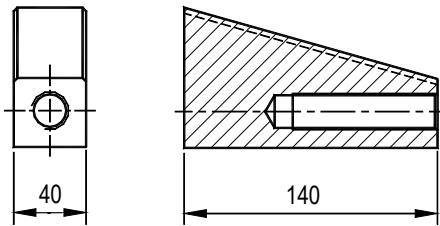


Part Name: **Post Extenders – 1ft,2ft or 3ft Assemblies**

Drawing No: EXPT

Weight: 33.8,41.8,49.8kg

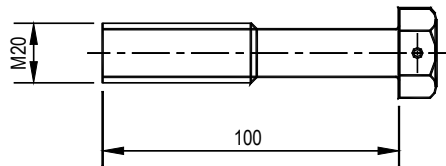
Note: please state the length
1ft,2ft or 3ft.



Part Name: **Wedge**

Drawing No: EXPT-2

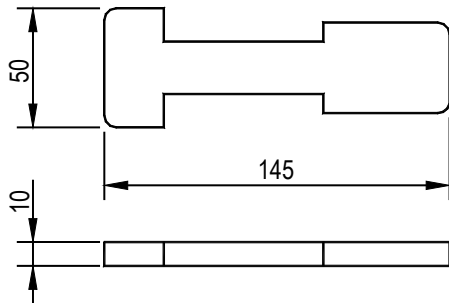
Weight: 2.05kg



Part Name: **M20 Bolt –Stainless**

Drawing No: GB32.2-88 M20X65

Weight: 0.28kg



Part Name: **H Plate**

Drawing No: EXTP-3

Weight: 0.19kg

